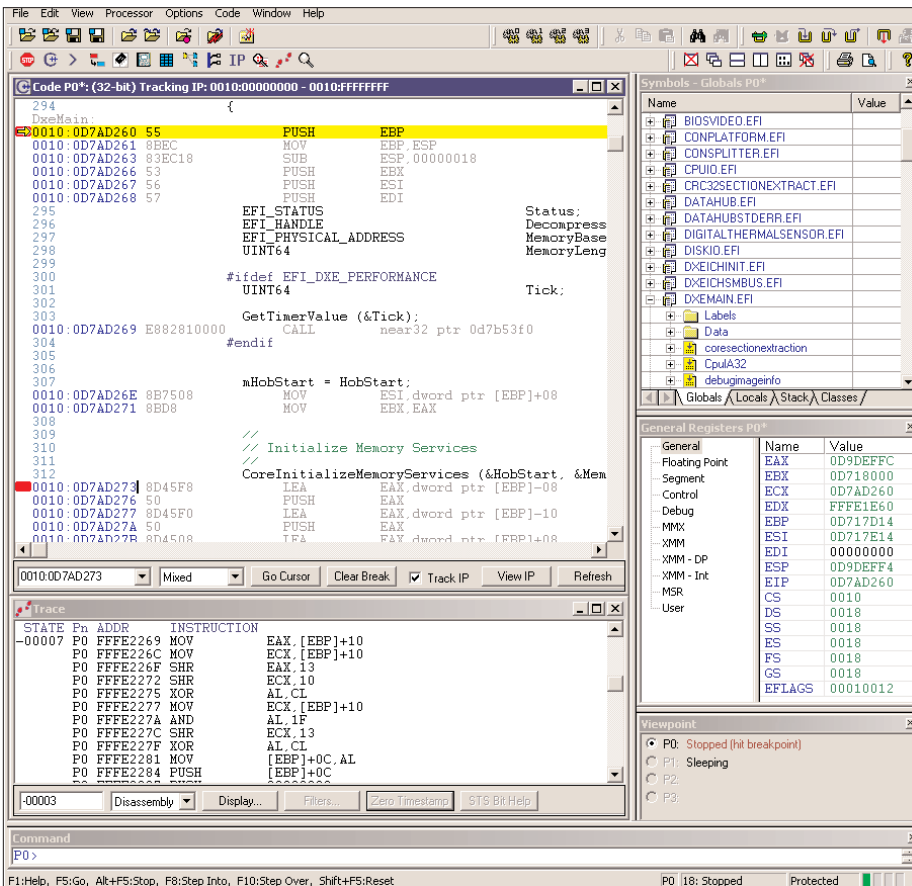


ECM-XDP EMULATOR



SOURCEPOINT INTERFACE

Included with the ECM-XDP3 is American Arium's SourcePoint debugging software. The debugger interface is part of the company's core technology developed specifically for high-end 32/64-bit processor design and debug. The application runs on Microsoft® Windows® 2000, XP, and Vista™.

SourcePoint is used with all American Arium emulators. Because the company designed and developed the software specifically for the equipment, the tight integration of the hardware and software gives you one of the most robust debug interfaces on the market. Easy to install and use, SourcePoint has a number of features that cannot be found in any other debugger. Multi-processor control, complex breakpoints, source-level visibility, and other key features together make SourcePoint one of the most powerful tools in the industry today.

SPECIFICATIONS

Environmental

32-90° F (0-31° C)
Maximum humidity - 85%

Communications

10/100Base-T ethernet
USB 1.1

JTAG Frequency

Up to 28 MHz

Download Speed

>200 KBytes/sec

Trig In

>50 Ohm, 155 ns maximum delay

Trig Out

50 Ohm, 125 ns maximum delay

Dimensions (inches)

(W) 3.800
(L) 5.004
(H) 1.510

PC HOST REQUIREMENTS

- PC host (Intel or AMD)
- Microsoft Windows 2000, XP, Vista
- SVGA monitor (1024 x 768 or higher)
- 60 MB hard disk space
- 128 MB RAM
- 10/100Base-T Ethernet or USB 1.1 connection port

ORDERING INFORMATION

STANDARD:

ECM-XDP Base unit with 60-pin XDP debug port connector
Warranty 1 year service agreement

OPTIONS:

STAR-1 Extended service agreement

THE COMPANY

American Arium has been the primary market supplier of hardware-assisted debug tools since 1992. The company supports Intel® and AMD laptop, desktop, and server processors (excluding Intel® Itanium® processors). Arium also supports a number of ARM®-architecture processors.

American Arium's mission is to meet and exceed the needs of hardware and software developers by providing them with the right tools to help them minimize their development/debug cycle.

**It's HARD TO COMPETE
WITHOUT THE RIGHT TOOLS**

