

ECM-HDT EMULATOR

THE ECM-HDT IS ARIUM'S LATEST EMULATOR FOR TARGETS EMPLOYING AMD LAPTOP, DESKTOP, OR SERVER PROCESSORS. DEVELOPED SPECIFICALLY FOR HDT DEBUG PORTS, THE ECM-HDT SUPPORTS BIOS, DEVICE DRIVERS, OS KERNELS, AND EMBEDDED APPLICATIONS DEBUG. THE EMULATOR DELIVERS RELIABLE RUN CONTROL FOR SUPERIOR VISIBILITY TO AND MANIPULATION OF SOURCE CODE FOR A FASTER TIME TO MARKET.

SUPPORTED TOOLCHAINS:

- Wind River® Tornado® II C/C++
- Microsoft® Visual C/C++® V6/V7
- Borland® C
- CAD-UL C
- GNU C/C++
- Metaware® C

BREAKPOINT TYPES:

- Up to 32 debug registers (depending on the processor)
- Unlimited software

SOURCE CODE/SYMBOLIC DEBUG:

- Boot-loadable OMF-386
- DWARF2
- Intel Textsym
- Codeview
- a.out/Stabs

DOWNLOAD FORMATS:

- BIN
- OMF-386
- ELF32
- DOS EXE
- Intel Hex
- PE32/PE32+

CONNECTION OPTIONS:

- USB 1.1
- 10/100Base-T Ethernet

ADDRESS TRANSLATION OPTIONS:

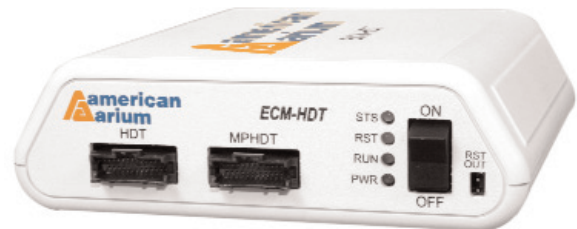
- Real
- Virtual-86
- BigReal
- Protected
- System Management Mode (SMM)

REGISTER TYPES:

- 386
- System
- Control
- Debug
- MSRs
- Floating point
- MMX™ technology
- SSE

OTHER IMPORTANT FEATURES:

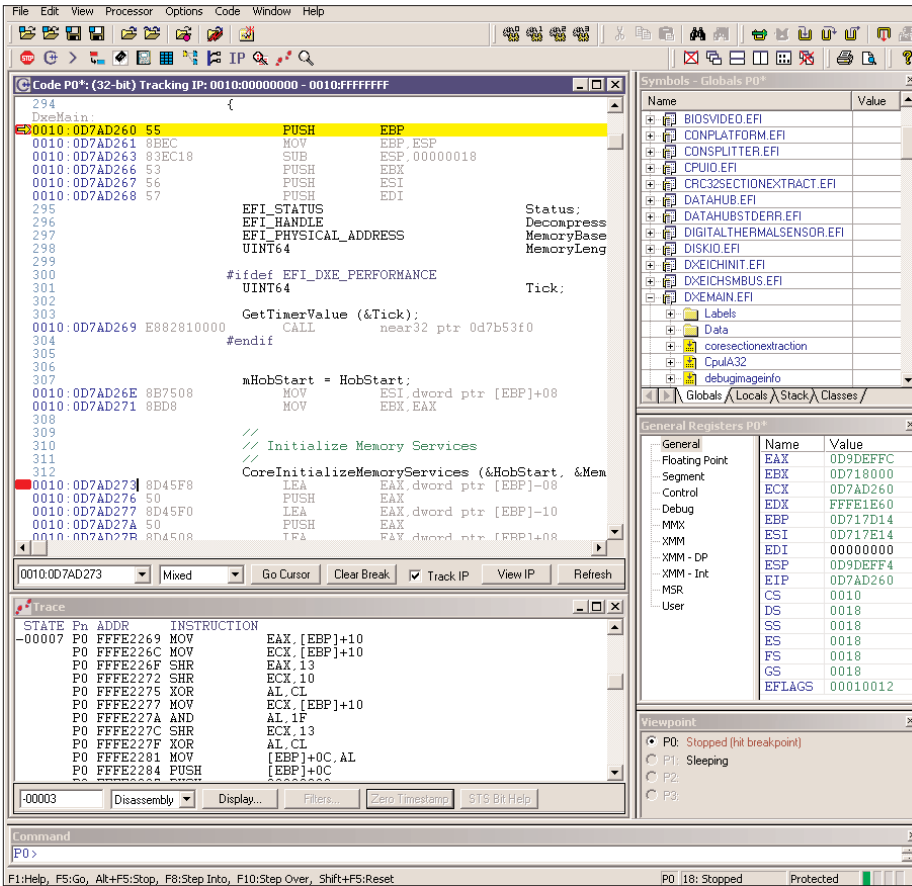
- Real time operation
- Multi-processor support
- Comprehensive C-like scripting language
- Code/data search and replace
- Self-diagnostic test suite
- Designed to accommodate all HDT debug port configurations



KEY BENEFITS

- **POWERFUL** - Arium emulators are the only debug tools that give you real-time debugging solutions directly out of system reset.
- **INNOVATIVE** - Arium focuses on the user when crafting our tools. A quick symbols finder, a single view for displaying devices, current viewpoint tracking - the little things that add up to so much more.
- **FLEXIBLE** - The ECM-HDT offers a number of firmware- and software-related customizable options to provide you with the type of debug environment that best meets your needs.
- **INTEGRATED & INTUITIVE** - The ECM-HDT, with its companion SourcePoint™ interface, provides a highly integrated, intuitive tool designed with your needs in mind.
- **FULLY SUPPORTED** - Our highly trained staff of design engineers provide telephone, e-mail, and web-based interactive support. In addition, installation guides, technical papers, and software downloads are available via our Web site.

ECM-HDT EMULATOR



SOURCEPOINT INTERFACE

Included with the ECM-XDP is American Arium's SourcePoint debugging software. The debugger interface is part of the company's core technology developed specifically for high-end 32/64-bit processor design and debug. The application runs on Microsoft® Windows® 2000, XP, and Vista.

SourcePoint is used with all American Arium emulators. Because the company designed and developed the software specifically for the equipment, the tight integration of the hardware and software gives you one of the most robust debug interfaces on the market. Easy to install and use, SourcePoint has a number of features that cannot be found in any other debugger. Multi-processor control, complex breakpoints, source-level visibility, and other key features all add up to make SourcePoint one of the most powerful tools in the industry today.

THE COMPANY

American Arium has been the primary market supplier of hardware-assisted debug tools since 1992. The company supports AMD and Intel laptop, desktop, and server processors (excluding Intel® Itanium® processors). Arium also supports popular ARM®-architecture processors.

American Arium's mission is to meet and exceed the needs of hardware and software developers by providing them with the right tools to help them minimize their development/debug cycle.

**It's HARD TO COMPETE
WITHOUT THE RIGHT TOOLS**

SPECIFICATIONS

Environmental

32-90° F (0-31° C)
Maximum humidity - 85%

Communications

10/100Base-T ethernet
USB 1.1

JTAG Frequency

Up to 75 MHz max

Download Speed

>200 KBytes/sec

Dimensions (inches)

(W) 5.25
(L) 5.50
(H) 1.89

PC HOST REQUIREMENTS

- PC host (Intel Pentium III or higher or equivalent)
- Microsoft Windows 2000, XP, Vista
- SVGA monitor (1024 x 768 or higher)
- 60 MB hard disk space
- 128 MB RAM
- 10/100Base-T Ethernet or USB 1.1 connection port

ORDERING INFORMATION

STANDARD:

- ECM-HDT** Base unit with HDT debug port connectors
- 6" single processor
 - 24" single processor
 - 24" multi-processor
- Warranty** 1 year service agreement

OPTIONAL:

- STAR-1** Extended service agreement



D0144A